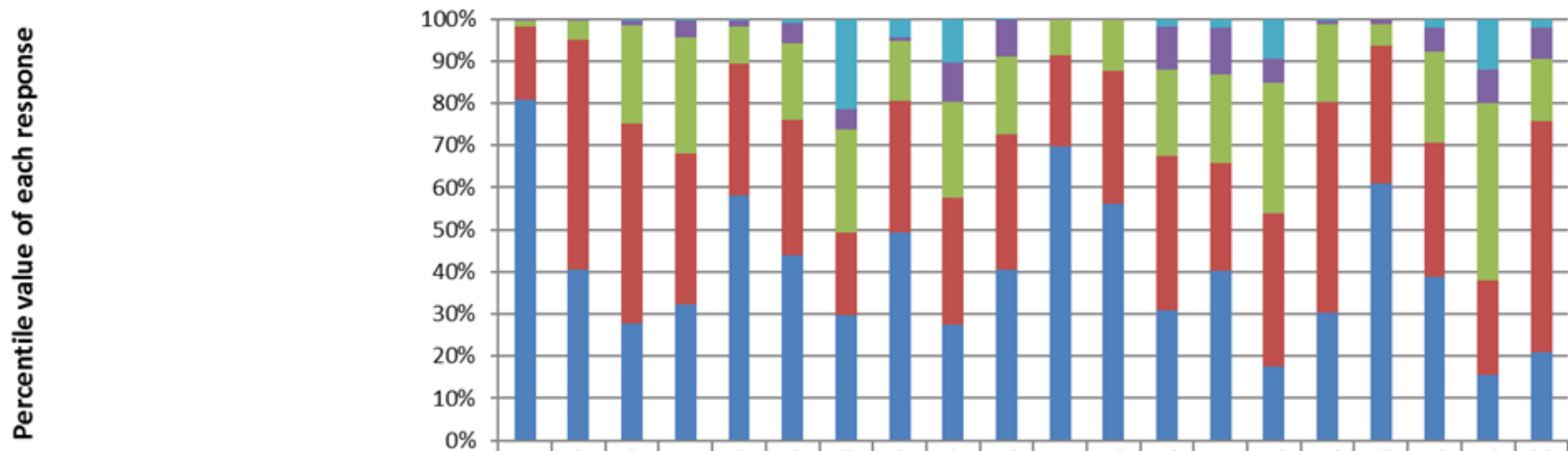


Analysis of Student Satisfaction Survey as on 30.01.2019



	1	2	3	4	5	6	7	8	9	10	11	12	13	14	15	16	17	18	19	20
Highly dissatisfied / Strongly disagree / V.Poor	0	0	4	4	4	11	228	47	115	2	0	0	21	24	95	3	0	24	131	22
Not satisfied / Disagree / Poor	3	3	12	46	15	52	52	11	102	97	2	2	113	124	59	12	15	62	89	83
Neutral / Moderate	17	50	257	306	96	202	258	157	254	204	93	133	224	233	315	203	56	238	461	163
Satisfied / Agree / V.Good	190	600	518	403	342	356	209	345	334	354	240	350	404	288	368	553	361	352	245	608
Highly satisfied / Strongly Agree / Excellent	893	444	305	360	637	485	317	545	304	450	772	623	339	448	179	335	676	428	171	231

Question No.

- Highly satisfied / Strongly Agree / Excellent
- Satisfied / Agree / V.Good
- Neutral / Moderate
- Not satisfied / Disagree / Poor
- Highly dissatisfied / Strongly disagree / V.Poor